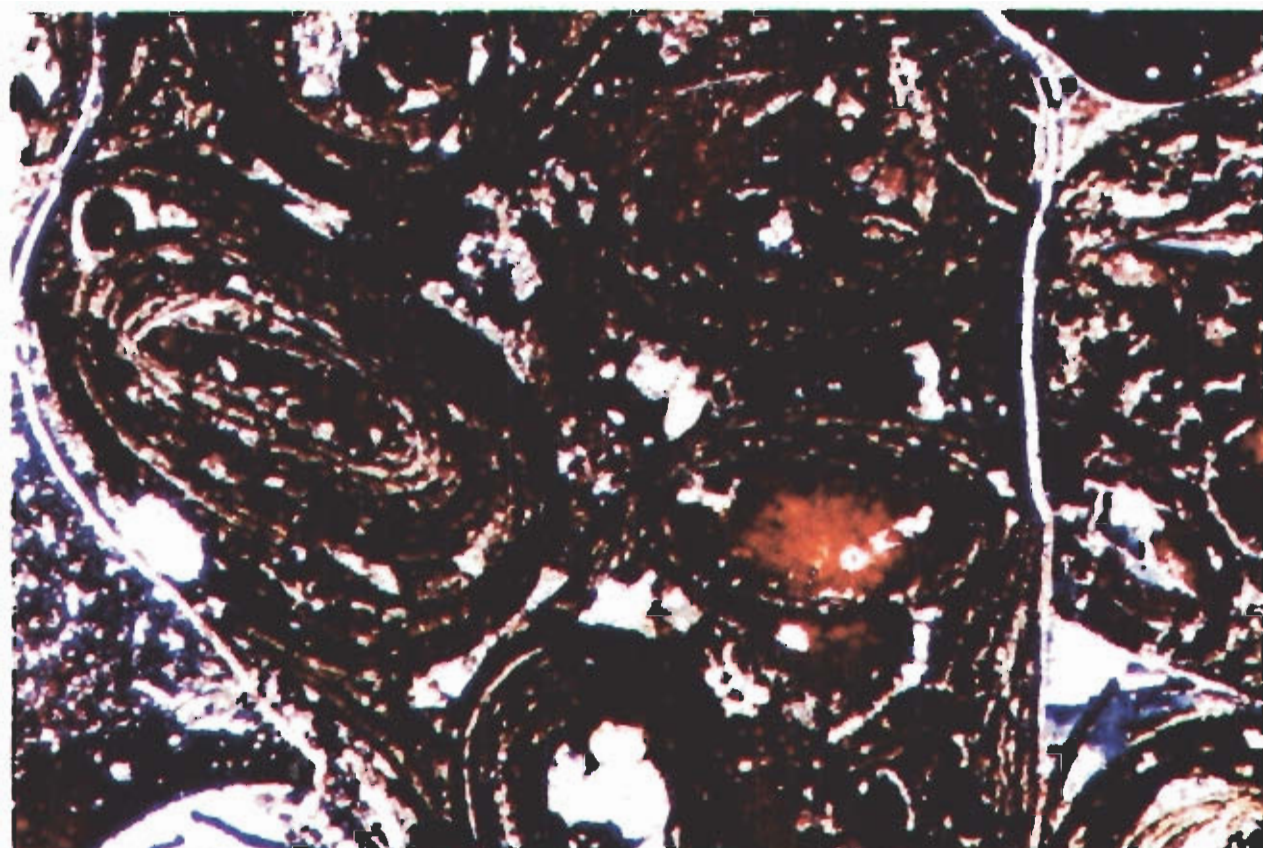


Figure 1. Photomicrograph of Dilband iron ore (plane polarized light, 4 X 10) representing typical oolitic texture, exhibited by ellipsoidal hematitic oolites embedded in a sparry calcite matrix (after Siddiqui 1999).



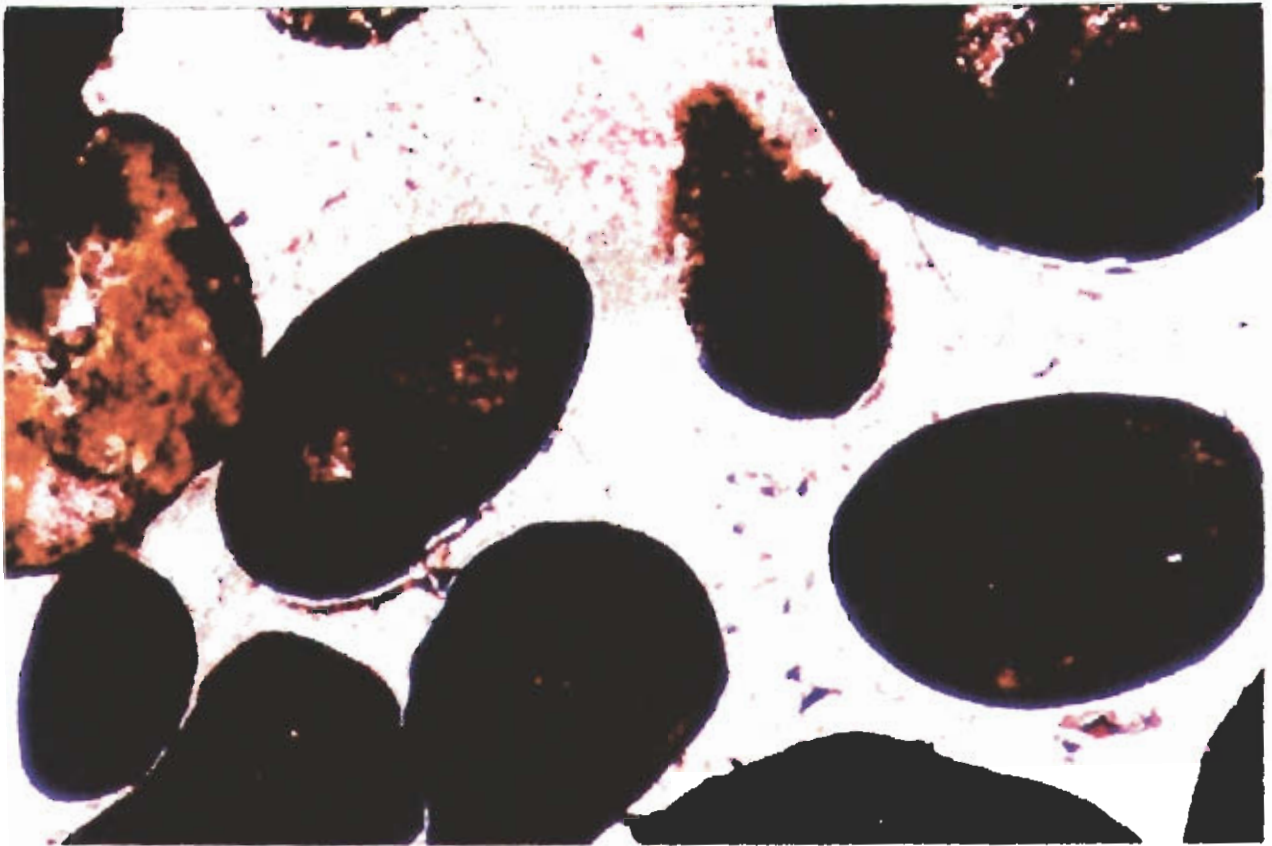
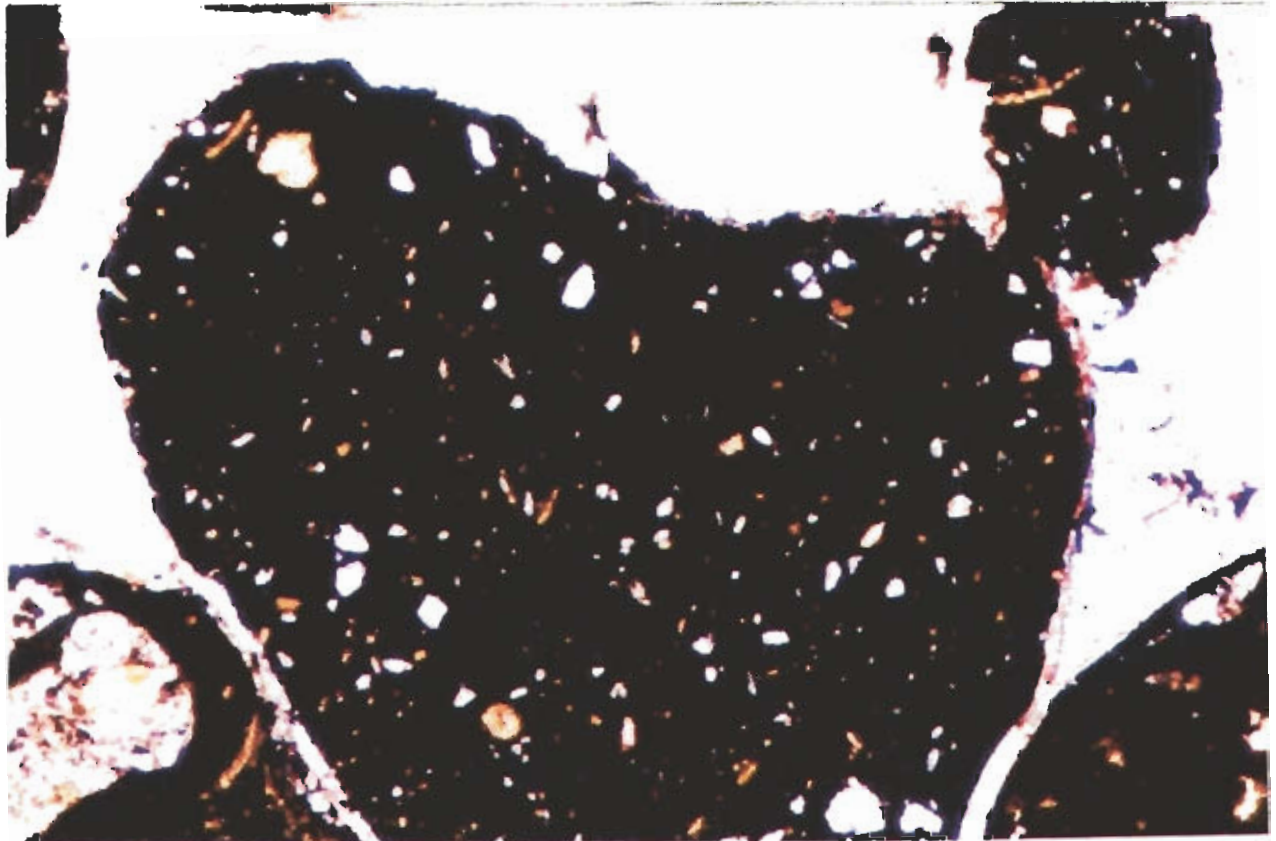


Figure 3. Photomicrograph (cross polarized light, 4 X 10) displaying several ellipsoidal hematite pellets embedded in a spary calcite matrix (after Siddiqui, 1999).



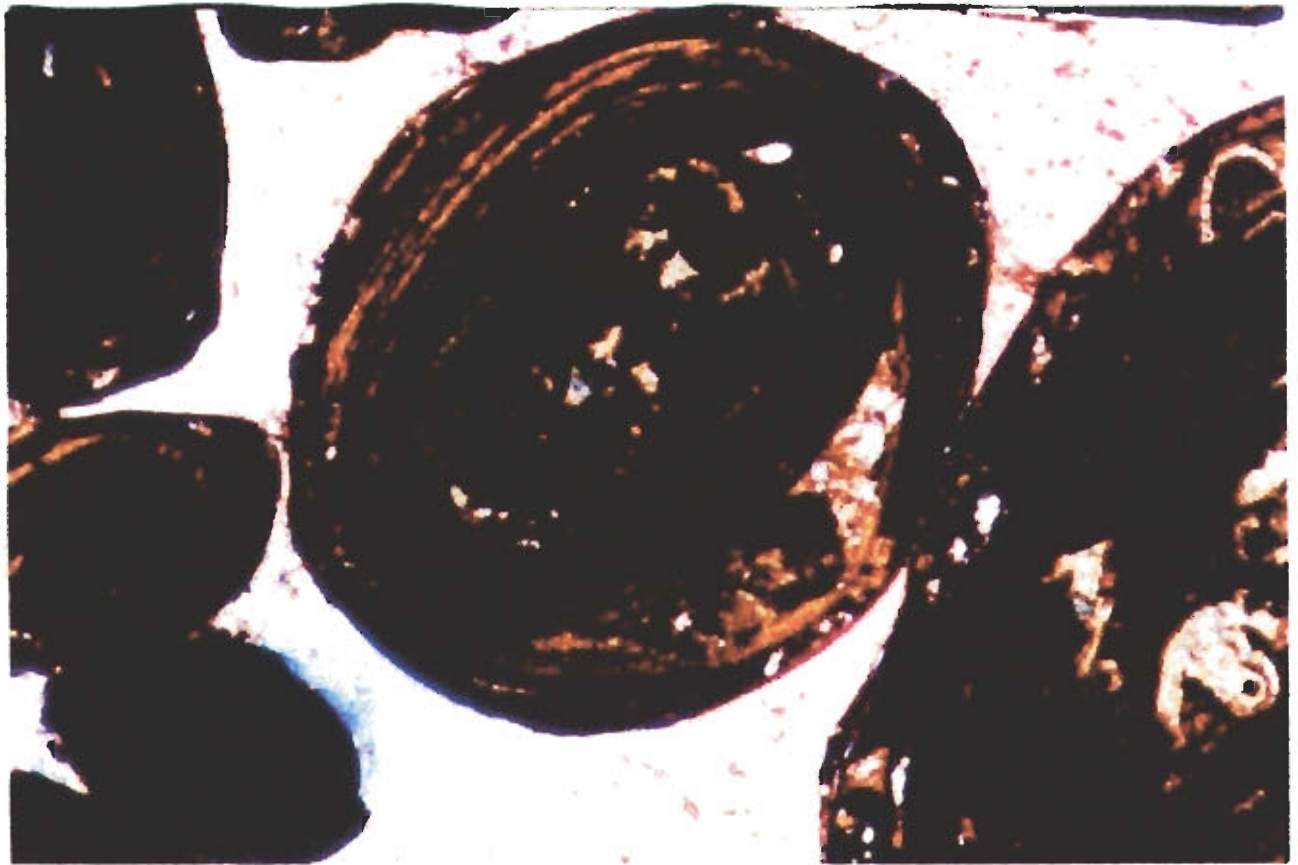
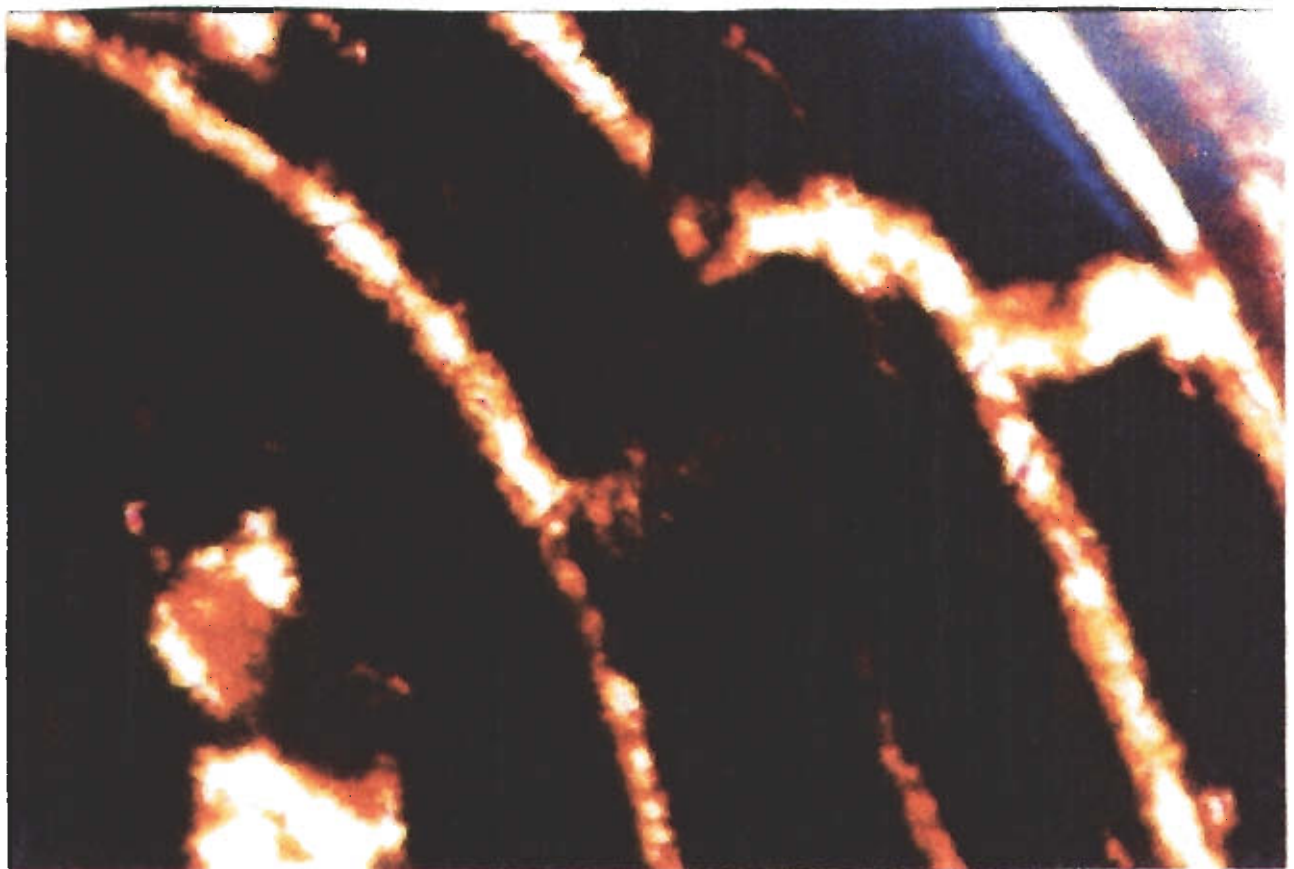


Figure 5. Photomicrograph (cross polarized light, 4 X 10) exhibiting concentric interlamination of hematite (black) and chamosite (orange yellow) in a rounded oolite (after Siddiqui, 1999).



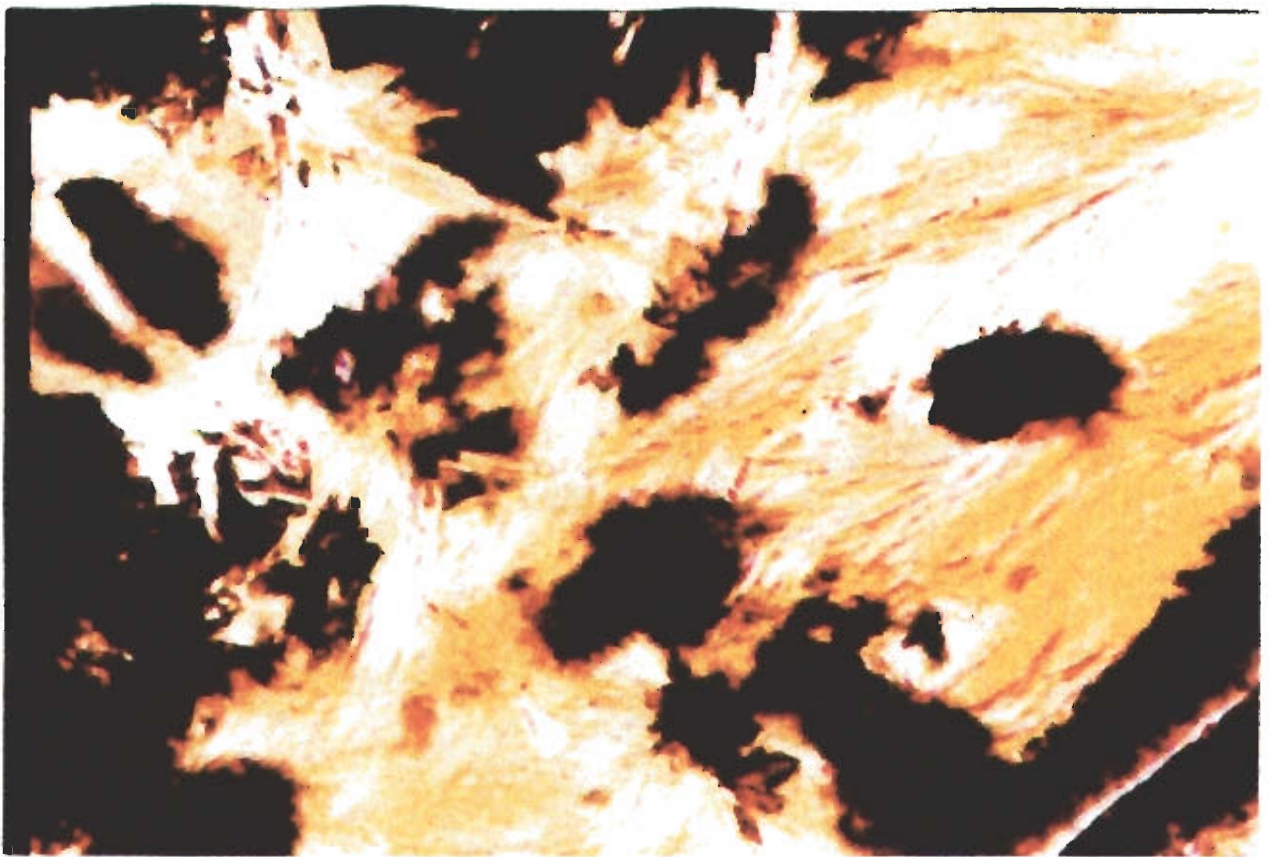


Figure 7. Photomicrograph (cross polarized light) displaying a magnified (40 X 10) part of a laminae of oolite exhibiting clusters formed by flaky Fe-clinochlore containing several small irregular inclusion of hematite (after Siddiqui, 1999).

